

### Trench Schottky Rectifier

#### FEATURES

- Patented Trench Schottky technology
- Excellent high temperature stability
- Low forward voltage
- Lower power loss/ high efficiency
- High forward surge capability
- Ideal for automated placement
- Moisture sensitivity level: level 1, per J-STD-020
- Compliant to RoHS Directive 2011/65/EU and in accordance to WEEE 2002/96/EC
- Halogen-free according to IEC 61249-2-21 definition



**TO-277A (SMPC)**



#### TYPICAL APPLICATIONS

Trench Schottky barrier rectifier are designed for high frequency miniature switched mode power supplies such as adapters, lighting and on-board DC/DC converters.

#### MECHANICAL DATA

**Case:** TO-277A (SMPC)

Molding compound, UL flammability classification rating 94V-0

Packing code with suffix "G" means green compound (halogen-free)

**Terminal:** Matte tin plated leads, solderable per JESD22-B102

Meet JESD 201 class 2 whisker test

**Polarity:** Indicated by cathode band

**Weight:** 0.095g (approximately)

MAXIMUM RATINGS AND ELECTRICAL CHARACTERISTICS (T <sub>A</sub> =25°C unless otherwise noted)						
PARAMETER	Symbol	TSP15U100S			UNIT	
Marking code		15U100				
Maximum repetitive peak reverse voltage	V <sub>RRM</sub>	100			V	
Maximum average forward rectified current	I <sub>F(AV)</sub>	15			A	
Peak forward surge current, 8.3 ms single half sine-wave superimposed on rated load per diode	I <sub>FSM</sub>	150			A	
Maximum instantaneous forward voltage per diode (Note 1)	I <sub>F</sub> = 5A I <sub>F</sub> = 7.5A I <sub>F</sub> = 15A	T <sub>J</sub> = 25°C	V <sub>F</sub>	MIN	TYP	MAX
				-	0.49	-
				-	0.52	-
	I <sub>F</sub> = 5A I <sub>F</sub> = 7.5A I <sub>F</sub> = 15A	T <sub>J</sub> = 125°C	V <sub>F</sub>	-	0.62	0.70
				-	0.40	-
				-	0.45	-
Maximum instantaneous reverse current per diode at rated reverse voltage	T <sub>J</sub> = 25°C T <sub>J</sub> = 125°C	I <sub>R</sub>	-	-	250	
			-	-	20	
Typical thermal resistance	R <sub>θJL</sub>	12			°C/W	
Operating temperature range	T <sub>J</sub>	- 55 to +150			°C	
Storage temperature range	T <sub>STG</sub>	- 55 to +150			°C	

Note 1: Pulse Test with Pulse Width=300µs, 1% Duty Cycle

**ORDERING INFORMATION**

PART NO.	PACKING CODE	PACKING CODE SUFFIX	PACKAGE	PACKING
TSP15U100S	S1	G	SMPC	1,500/ 7" Plastic reel
	S2		SMPC	6,000/ 13" Plastic reel

Note: Whole series with green compound

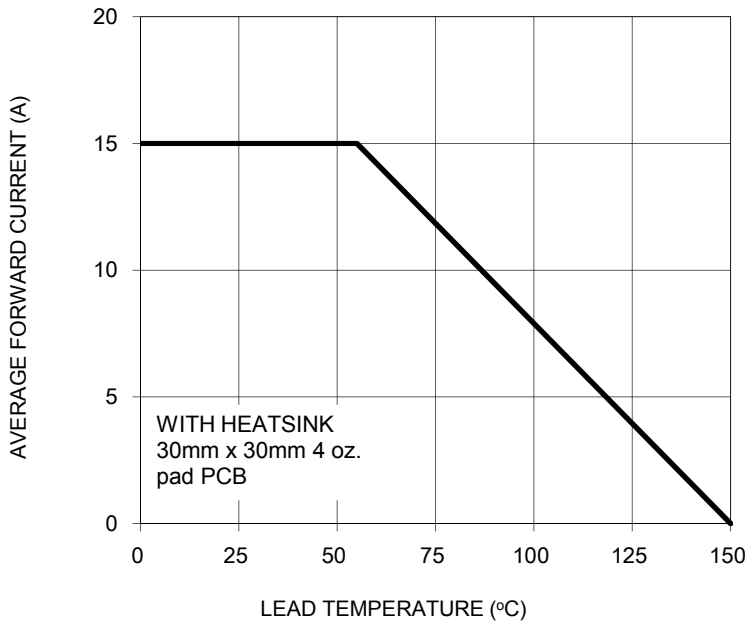
**EXAMPLE**

PREFERRED PART NO.	PART NO.	PACKING CODE	PACKING CODE SUFFIX	DESCRIPTION
TSP15U100S S1G	TSP15U100S	S1	G	Green compound

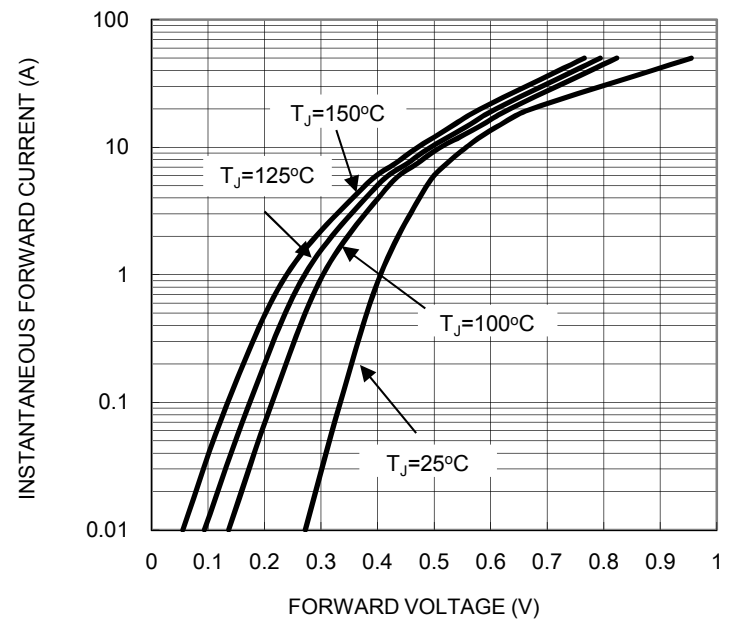
**RATINGS AND CHARACTERISTICS CURVES**

( $T_A=25^\circ\text{C}$  unless otherwise noted)

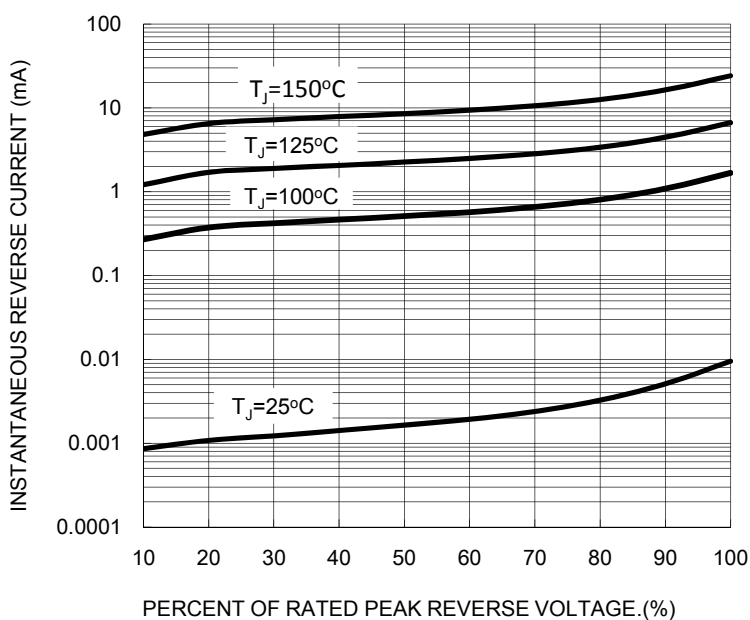
**FIG. 1 FORWARD CURRENT DERATING CURVE**



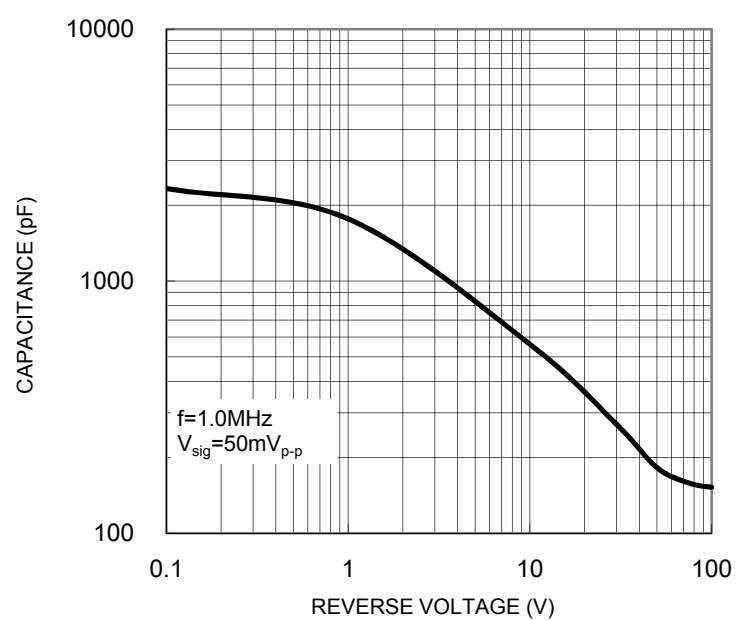
**FIG. 2 TYPICAL FORWARD CHARACTERISTICS**



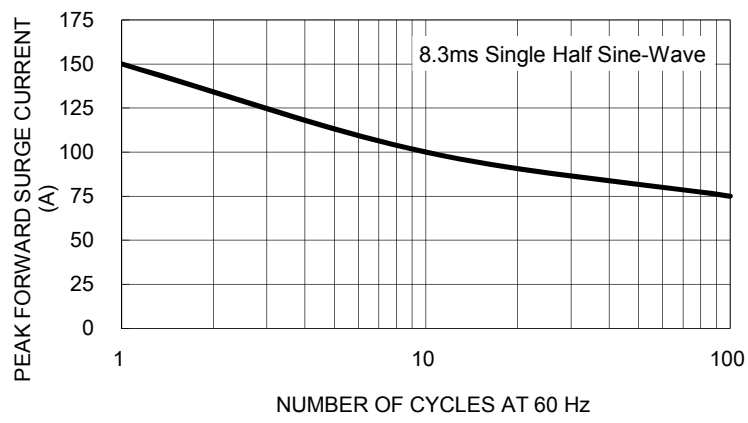
**FIG. 3 TYPICAL REVERSE CHARACTERISTICS**



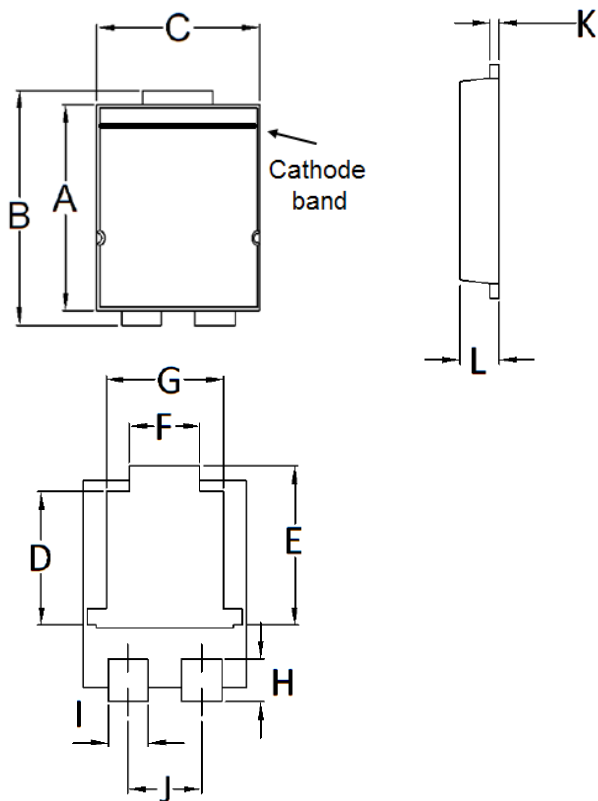
**FIG. 4 TYPICAL JUNCTION CAPACITANCE**



**FIG. 5 MAXIMUM NON-REPETITIVE FORWARD SURGE CURRENT**

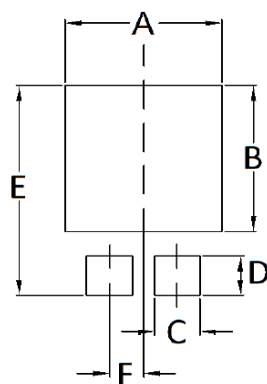


**PACKAGE OUTLINE DIMENSIONS  
TO-277A (SMPC)**



DIM.	Unit (mm)		Unit (inch)	
	Min	Max	Min	Max
A	5.650	5.750	0.222	0.226
B	6.350	6.650	0.250	0.262
C	4.550	4.650	0.179	0.183
D	3.540	3.840	0.139	0.151
E	4.235	4.535	0.167	0.179
F	1.850	2.150	0.073	0.085
G	3.170	3.470	0.125	0.137
H	1.043	1.343	0.041	0.053
I	1.000	1.300	0.039	0.051
J	1.930	2.230	0.076	0.088
K	0.175	0.325	0.007	0.013
L	1.000	1.200	0.039	0.047

**SUGGESTED PAD LAYOUT**



Symbol	Unit (mm)	Unit (inch)
A	4.80	0.189
B	4.72	0.186
C	1.40	0.055
D	1.27	0.050
E	6.80	0.268
F	1.04	0.041

**MARKING DIAGRAM**



P/N = Marking Code  
 YW = Date Code  
 F = Factory Code

## Notice

Specifications of the products displayed herein are subject to change without notice. TSC or anyone on its behalf, assumes no responsibility or liability for any errors or inaccuracies.

Information contained herein is intended to provide a product description only. No license, express or implied, to any intellectual property rights is granted by this document. Except as provided in TSC's terms and conditions of sale for such products, TSC assumes no liability whatsoever, and disclaims any express or implied warranty, relating to sale and/or use of TSC products including liability or warranties relating to fitness for a particular purpose, merchantability, or infringement of any patent, copyright, or other intellectual property right.

The products shown herein are not designed for use in medical, life-saving, or life-sustaining applications. Customers using or selling these products for use in such applications do so at their own risk and agree to fully indemnify TSC for any damages resulting from such improper use or sale.